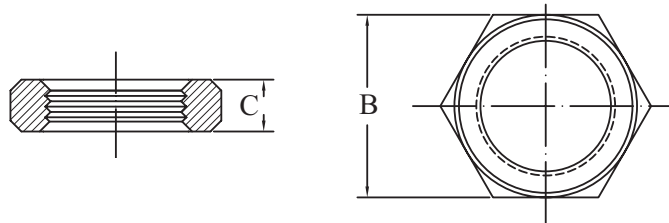
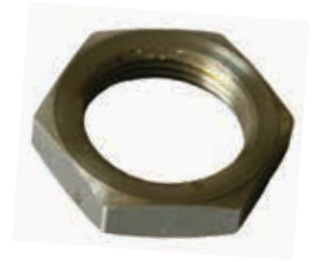


PEAL® Black & Galvanised Mild Steel Hexagon Backnut

Black & Galvanised Mild Steel Hexagon Backnut					
AAP CODE		IMPERIAL SIZE	B	C	APPROX. (KG/PC)
BLACK	GALVANISED				
SBN06	SBN06G	1/8	19.1	6.5	0.01
SBN08	SBN08G	1/4	22.2	7.0	0.01
SBN10	SBN10G	3/8	27.0	7.9	0.02
SBN15	SBN15G	1/2	30.0	9.0	0.03
SBN20	SBN20G	3/4	35.0	9.7	0.04
SBN25	SBN25G	1	47.2	10.3	0.08
SBN32	SBN32G	1 1/4	52.1	11.1	0.08
SBN40	SBN40G	1 1/2	61.3	11.9	0.13
SBN50	SBN50G	2	70.0	13.3	0.15
SBN80	SBN80G	3	100.0	21.5	0.45



PEAL® Black & Galvanised Mild Steel Cross

Black & Galvanised Mild Steel Cross				
AAP CODE		IMPERIAL SIZE	A	APPROX (KG/PC)
BLACK	GALVANISED			
SCR08	SCR08G	1/4	47	0.15
SCR10	SCR10G	3/8	47	0.11
SCR15	SCR15G	1/2	64	0.22
SCR20	SCR20G	3/4	68	0.29
SCR25	SCR25G	1	86	0.49
SCR32	SCR32G	1 1/4	103	0.79
SCR40	SCR40G	1 1/2	105	0.97
SCR50	SCR50G	2	128	1.58

